



# Wilbraham Sewer System Expansion

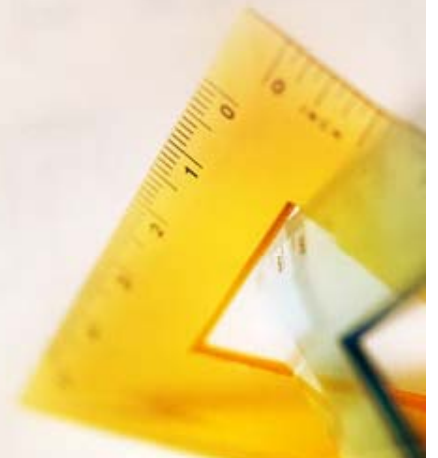
Town of Wilbraham, Massachusetts

Public Information Hearing

May 1, 2007

# Presentation Agenda

- **The Small Print...**
- **Project History**
- **Presentation of Problems**
- **Presentation of Solutions**
- **Financial Discussion**



## **Disclaimer:**

**Although this project has been under consideration for many years, the financial analyses associated with its construction and operation are still being finalized.**

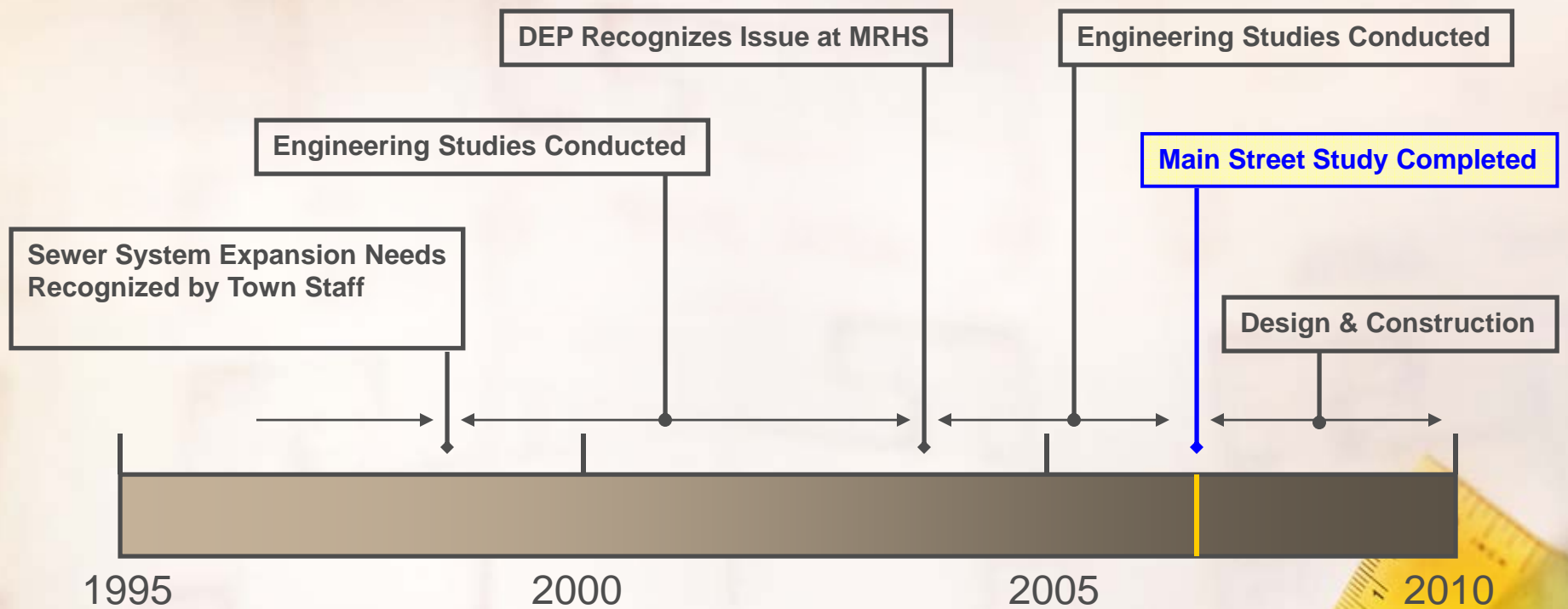
**All financial data presented this evening remains in**

**DRAFT FORM ONLY**

**and is subject to change as the project plans are finalized.**



# Project History



# Minnechaug Regional H.S.

- Flows Exceed Title 5 Limits
- Directed by DEP to Upgrade
- 1,350 Students



Photos by Joe Roberts

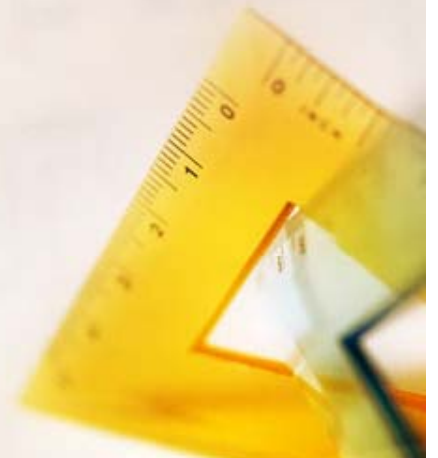
# Main Street



- **Failing Septic Systems – 48%**
  - **Require I/A Treatment or Public Sewers**
  - **Poor Soils**
    - Slow Percolation Rates
    - Insufficient Depth to Groundwater
  - **Flooding**
  - **Small Lots / Parcels**
  - **Documented Backups, Basement Flooding**

# Wilbraham & Monson Academy

- **Flows Exceed Title 5 Limits**
  - Over 15,000 gpd
  - 24 Different Buildings / Facilities
- **Aging Pipes & Tanks**
  - Leaking Pipe Joints
  - Potential for GW Contamination



# Evaluation of Solutions

- **Title 5 Upgrades / Repairs**
  - **Poor Soils & High Flows**
- **Wastewater Treatment Facility**
  - **High Cost / Few Beneficiaries**
- **Public Sanitary Sewers – Main Street**
  - **Gravity Sewers**
  - **Low-Pressure Sewers**
  - **Implications?**

# **Sanitary Sewer Implications**

- 1. Existing Intermunicipal Agreement**
- 2. Springfield Capacity Issues**
- 3. Wilbraham Capacity Issues**

# Sanitary Sewer Implications

- **Intermunicipal Agreement**
  - **300,000 gpd current limit**
    - Currently Exceeded
  - **650,000 gpd requested**
  - **Agreement Under Negotiation**



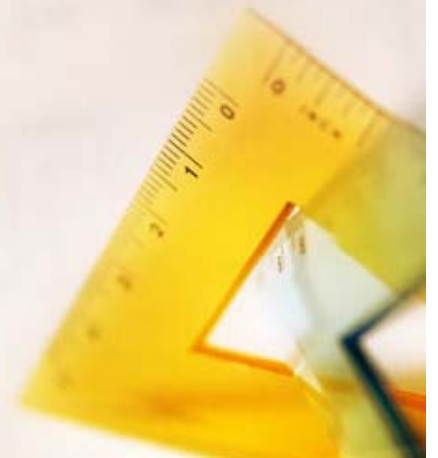
# Sanitary Sewer Implications

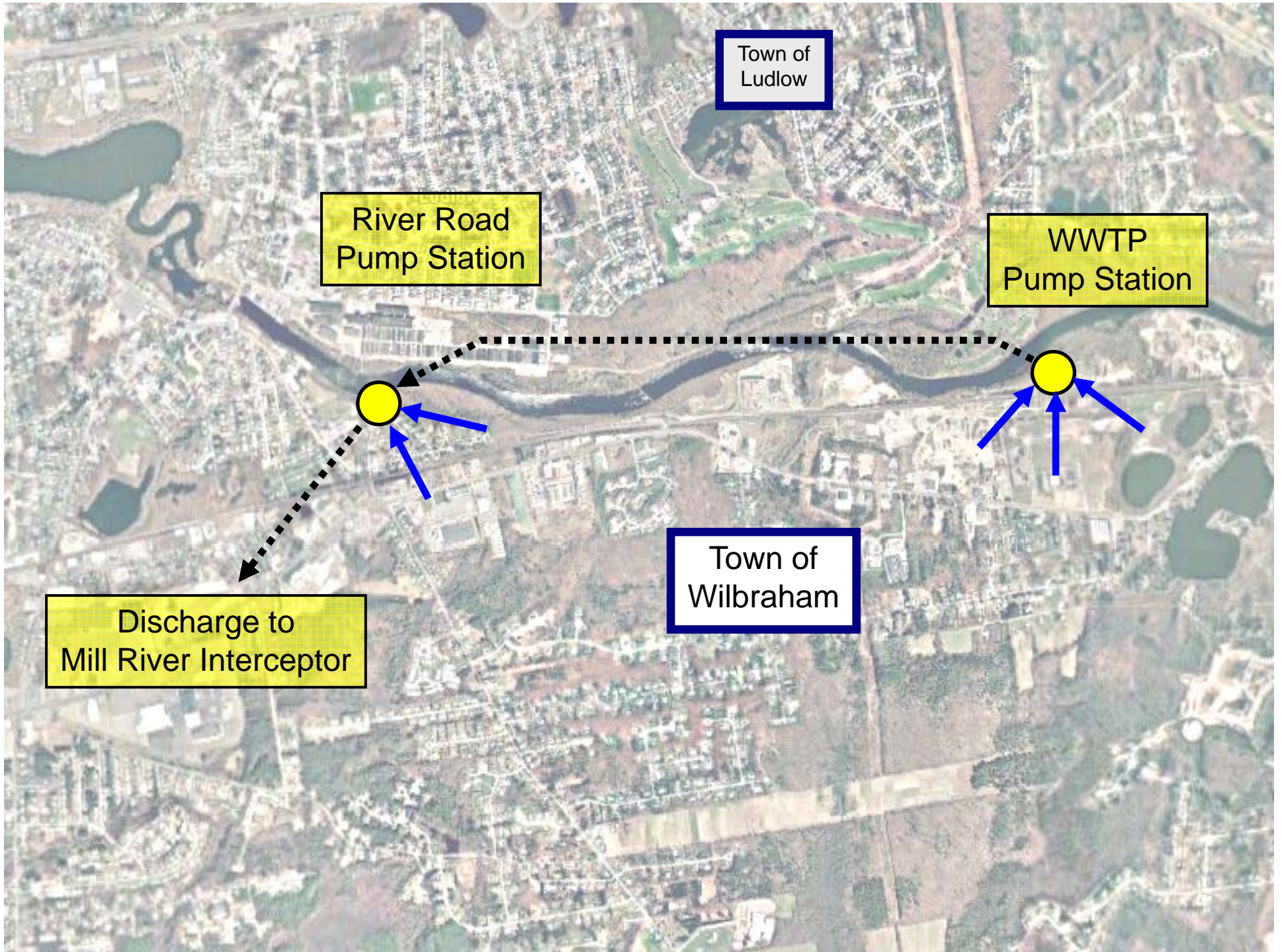
- **Mill River Interceptor**
  - Existing Discharge Location
  - Subject to Overflows
  - Limited Capacity
  
- **Indian Orchard (I/O)**
  - Proposed Discharge Location
  - System Upgrades
  - Increased Capacity



# Sanitary Sewer Implications

- **Wastewater Treatment Plant**
  - **Pump Upgrades Necessary**
  - **Forcemain Extension**





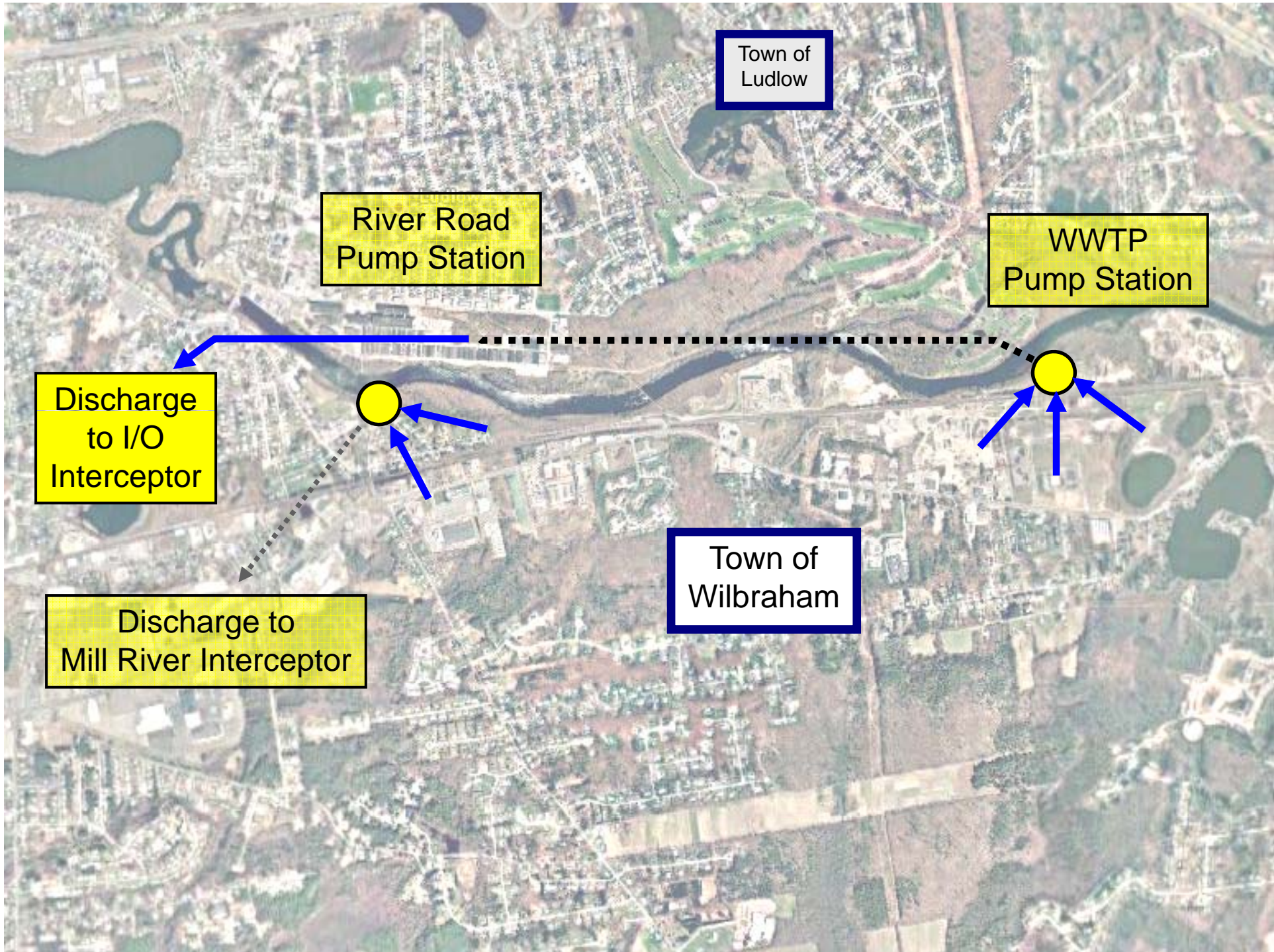
Town of Ludlow

River Road Pump Station

WWTP Pump Station

Town of Wilbraham

Discharge to Mill River Interceptor



Town of Ludlow

River Road Pump Station

WWTP Pump Station

Discharge to I/O Interceptor

Discharge to Mill River Interceptor

Town of Wilbraham

# Financial Discussion

